

TSUNAMIS



CREATED BY:
Double Dose
Of Learning

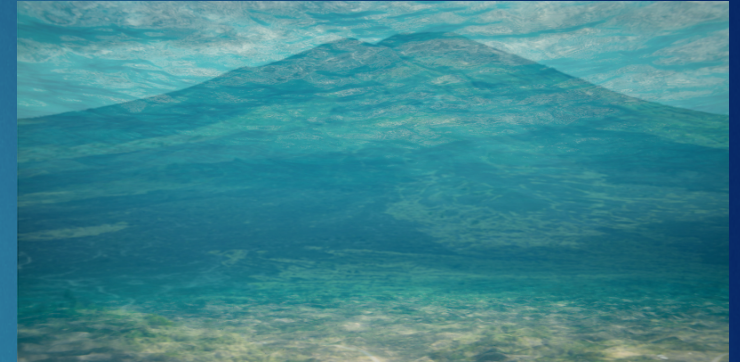
WHAT IS A TSUNAMI?

- A tsunami is a huge wave or wall of water.
- Tsunamis can cause a large amount of damage to coastal areas.

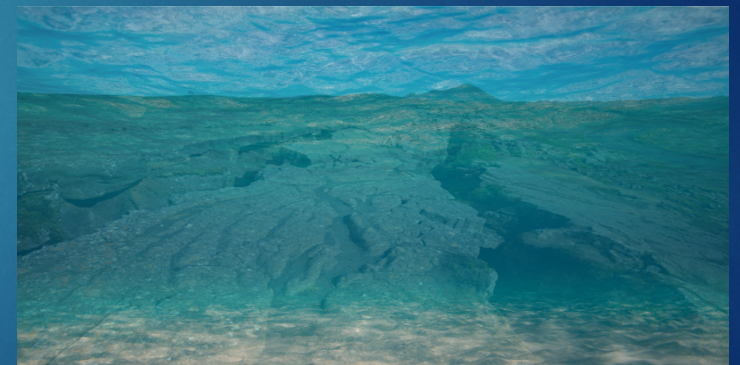


CAUSES

- ▶ Tsunamis are usually caused by volcanic eruptions or underwater earthquakes.
- ▶ Large waves form from the force of the eruption or earthquake.
- ▶ The waves flow straight and very fast.
- ▶ Waves can reach up to 100 feet in the air!



UNDERWATER VOLCANOES



UNDERWATER EARTHQUAKES

CHARACTERISTICS



- Huge waves
- Moves fast
- Very destructive

DESTRUCTION

- ▶ Buildings can collapse
- ▶ Flooding can occur
- ▶ Trees and power lines can fall
- ▶ People can get injured or lose their life



SAFETY

- ▶ Have a disaster plan.
- ▶ Know a safe route to evacuate.
- ▶ Prepare a disaster supply kit.
- ▶ Listen to the radio or watch the news for information from the authorities.
- ▶ Evacuate immediately if told to do so.



INTERESTING FACTS

- Tsunami's mean "great harbor wave" in Japanese.
- There are usually 2 tsunamis in the world every year.
- Most tsunamis happen in "The Ring of Fire". This area is in the Pacific Ocean where earthquakes and volcanic eruptions often take place.
- States in the U.S. that are at the greatest risk for tsunamis are Hawaii, Alaska, Washington, Oregon and California.

